



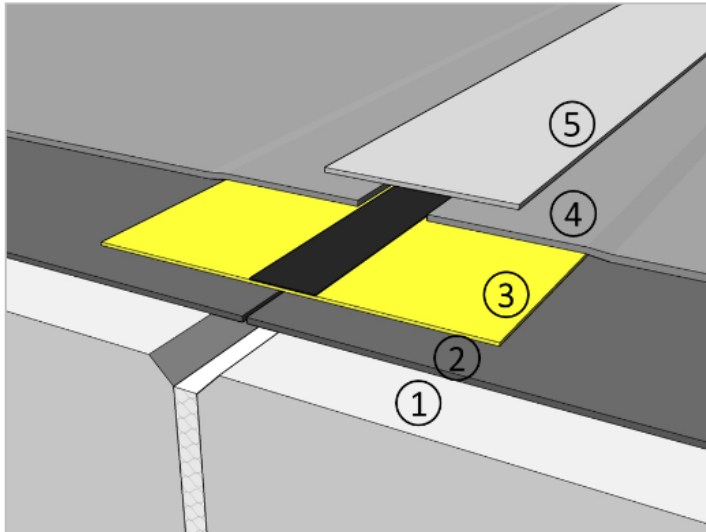
PCC-190919-NZ

Version 1 0.4
ISSUED: Sep 2019
EXPIRES: 31 Aug 2021

A Product Compliance Certificate



Product: FlamLINE® and RedLINE® Waterproof Expansion Joint Systems



Product description:¹

The FlamLINE® and RedLINE® Waterproof Expansion Joint Systems.

Scope of Use & Limitation Statement:²

A. FlamLINE® and RedLINE® waterproof expansion joint systems are intended for use with:

- New and or existing roofs, decks or other surfaces with torch-on or mastic asphalt waterproofing;
- New and or existing roofs, decks or other surfaces with waterproofing systems such as epoxy resin or liquid bond (only with approval from Soba AG);
- New and or existing bridges, or other applications, that require a system to prevent the ingress of external moisture at expansion joints;
- For use above grade;
- To be protected from UV light;
- Not to be installed in trafficable areas without the use of a mechanical protection system approved by Soba Inter AG;
- Not to be used on new and or existing roofs/decks that use waterproofing systems such as epoxy resin and liquid bond; without the approval of Soba Inter AG.

B. All designs and construction shall be in accordance with the Technical Manual ver 1.0 issued September 2019

C. Installation shall be performed by Soba Inter AG trained and approved installers;

D. Quality and maintenance shall be in accordance with the Soba Inter AG Building Product Quality Plan ver 1.0 issued September 2019.

Applicant:



Soba Inter AG

Im Grund 15
5405 Baden-Dättwil,
SWITZERLAND
c/- Seismic Guys Ltd
Ph 0800 4 SEISMIC (080047347642)
www.seismicguys.co.nz



Issuer:

Building Element Assessment Laboratory Ltd.

Tel: +64 233 6661
E-Mail: sales@beal.co.nz
www.beal.co.nz



A Product Compliance Certificate



PCC-152219-NZ

Version 1 0.4

ISSUED: Sep 2019

EXPIRES: Aug 2020

NZBC Compliance

B1.3.2 - The product meets the adhesive requirements for its application

B1.3.3 (h), (l) and (m) - Wind, Reversing and fluctuating effects & Differential movement.

B2.3.1 (b) & B2.3.2 - 15 years

E2.3.1 & E2.3.2 - shedding of precipitation and resistance of water penetration

F2.3.1 The product is not a health hazard to people

Evidence relied upon including a buildability assessment:

B1.3.2: A QAI Laboratory Test Report RJ3790 dated 31/5/2015

B1.3.3. (h), (l) and (m) and B2.3.1 (a): A BEAL Test Report TR16021-3 plus in service history in NZ

F2.3.1: A UL Environment test report 90696 dated 31/5/2015 plus an opinion from a BEAL building scientist.

Compliance with the Australian NCC - Volume One: (Class 2 to 9 buildings)

FP1.2 Preventing rainwater from entering buildings

FP1.4 Weatherproofing - assessed as an "alternative solution"

Title & version of the current Technical & Installation Manual:

The FlamLINE® and RedLINE® waterproof expansion joint systems Technical & Installation Manual ver 1.0 issued September 2019, is available from

www.seismicguys.co.nz and the BEAL website www.beal.co.nz

Title & version of the current Building Product Quality Plan* & Site Checklists:

The Soba Inter AG BPQP ver 1.0 - issued September 2019

Requirement for factory audits - where applicable:

Manufacturing is monitored by way of periodic external auditing of the manufacturer's quality plan that is in conformance with ISO 9001.

Requirement for the training and approval of Supervisors:

The agent for Soba Inter AG in Australasia, Seismic Guys, has a ISO10015 based Supervisor Training Programme** which is subject to review and audit at least 12 monthly by (BEAL)

Requirement for the certificate-holder to have a Register of trained and approved Supervisors:

Seismic Guys have a Register of Supervisors which is subject to review and audit at least 12 monthly

Warranty & maintenance info supplied:

Soba Inter AG provide through their agent, a Warranty and Owner Maintenance document on completion of each project

Certificate-issuer QA qualifications and audit requirements:

Building Element Assessment Laboratory Ltd. is assessed annually for compliance against the requirements of the BEAL Product Compliance

Certificate 'Scheme Rules' and against the requirements of ISO 17067 and ISO 17021 by QMS www.qmsgroup.org

Certificate-issuer Professional Indemnity statement:

Building Element Assessment Laboratory Ltd. has Professional Indemnity Insurance that covers the scope of work described in this certificate.

Notes:

1 - Please contact BEAL if further information is required.